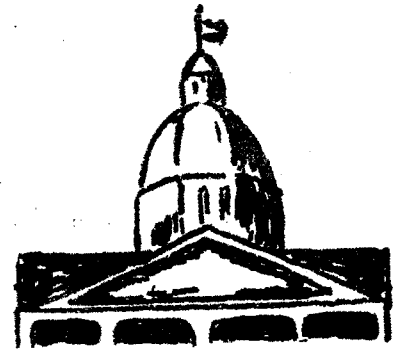




Tallahassee VOTER



League of Women Voters of Tallahassee, Florida

Purpose: To Promote Political Responsibility Through Informed and Active Participation of Citizens in Government

President - Mrs. Harold E. Chapman
1025 Alachua Ave.

Editor - Mrs. N. E. La Seur
Rt. 9, Box 905

VOL. VII, No. 4

September, 1968

CALENDAR

PLEASE TAKE NOTE OF CHANGE OF DAY, WEEK, AND MEETING PLACE OF GENERAL MEETINGS FOR THIS YEAR. WEDNESDAYS, USUALLY 2ND & 4TH WEEKS IF TWO MEETINGS ARE HELD.

- Sept. 18 - Board Meeting - Dinner meeting at the home of Mrs. R. W. Menzel, 1605 Kolopakine Nene - Mrs. Richard Miller, our consultant from the state board will meet with us.
- Sept. 25 - General membership and new member meeting. Panel discussion on consolidation of city-county government for Leon County - Tallahassee. Red Cross Building, Gadsden & Williams St. 8:00 P.M.
- Oct. 9 --- General membership meeting - Consensus meeting on structure phase of State Education Item - Red Cross Building - 8:00 P.M.
- Oct. 16 -- Board Meeting - home of Mrs. Sam Moorer - 8:00 P.M.
- Oct. 23 -- General Membership meeting - Consensus Meeting on National Human Resources Item dealing with fair housing standards.
- Nov. 5 --- General Election.

We wish to thank the Le Moyne Art Foundation for allowing us to hold our meetings there in the spring and summer. This winter we are very pleased to have scheduled our meetings at the American Red Cross building on North Gadsden Street. This is a central location, easy to find, and no parking problem (on Williams St.). In general, the meetings will be the 2nd and 4th week of the month, ~~and~~ on Wednesday evenings.

Betty Dyckman, Constitutional Revision chairman for our League, has moved to Jacksonville. Her presence on our board will be greatly missed, but our loss is Jacksonville's gain. She has been asked to serve as Con Rev chairman for the Jacksonville League. Bobbie Baker has consented to be Con Rev Chairman for our League for the rest of the year. Margaret ~~Garner~~ has assumed the Human Resources portfolio.

Garner

2

VOTERS SERVICE
Marge Meeter, Chairman

The Voter Service Committee of the Tallahassee League is ^{coordinating} ~~conducting~~ the statewide "VOTE"--Voter Registration Drive in Leon County. The League's primary role is to stimulate the activity of as many Leon County civic and fraternal organizations in the drive as possible. Each club member is being urged to encourage just one unregistered voter to add his name to the voter rolls. So please help us--make sure your family is registered and encourage your friends, neighbors and co-workers to register. (The registration books close October 5.)

Presidential Balloting for New Residents

Know anybody who has moved here recently? A recent change in Florida statutes now allows a new resident to vote for the President and Vice-President if he is a registered voter elsewhere and files an application by October 5 with the Supervisor of Elections, County Courthouse. Spread the good news!!

Stop by and see the displays of League publications and registration information at the Leon County library.

The League will be poll-reporting for ABC on election night. Two precincts have been chosen from our county to be reported as soon as the count is completed. Inez Weaver and Fran La Seur will cover one, and Suzanne Leif and Cherry Shadduck will cover the other one. ABC will pay our League \$15.00 per precinct for providing this service.

COMMUNITY PLANNING
Inez Weaver, Chairman

Members of the Community Planning Committee will present a brief but informative panel discussion on the "Consolidation of City and County Governments" at the membership meeting, September 25. Panel members will be Ora Kromhout, Ginnie Pankaskie, and Dorothy Dodd, with Fran Schneider as acting chairman in Inez Weaver's absence.

Purpose of the panel is to bring about an awareness of the consolidation study to those new in Tallahassee, and provide members with the information gathered by the committee through their study to date.

League members were grieved, along with hundreds of other Tallahasseans, at the death of Irene Edmonds on July 23, 1968. Her friendship has been of value to all of us, and her activities in LWV, as a member and as a board member, have been exemplary.

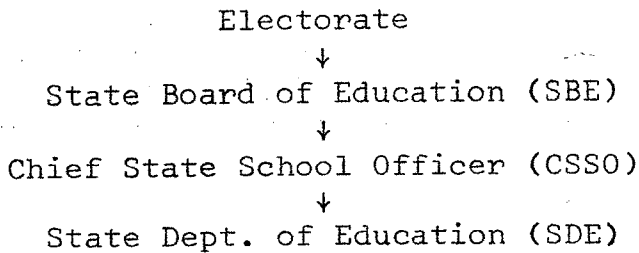
Board members sent a memorial gift to Le Moyne Art Foundation, in her name.

Irene's leadership and spirit, although removed from our presence, will be long remembered and cherished.

CONSENSUS QUESTIONS on the structure portion of the State Emergency Agenda item on public education will be discussed at the October 9 membership meeting, the last chance before the December 31 consensus deadline. Please read the background material in the September Florida Voter, and bring it and this Tallahassee Voter to the meeting.

Each state has its unique educational structure, but three general patterns are discernible:

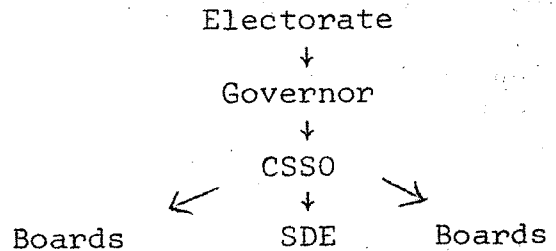
PATTERN A, favored by students of educational administration:



Virtues: separations of legislative from executive processes.

Defects: awkward in practice; difficult to get qualified candidates for SBE posts.

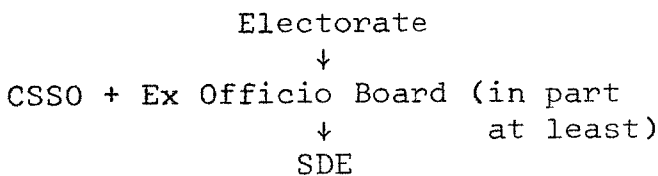
PATTERN B, favored by political scientists:



Virtues: fixing of responsibility; efficient administration; fits "strong executive" theory.

Defects: legislature and electorate often balk at centralizing power over education in one man; education subject to buffeting of partisan politics.

PATTERN C, which grew out of 19th century experience with public education:

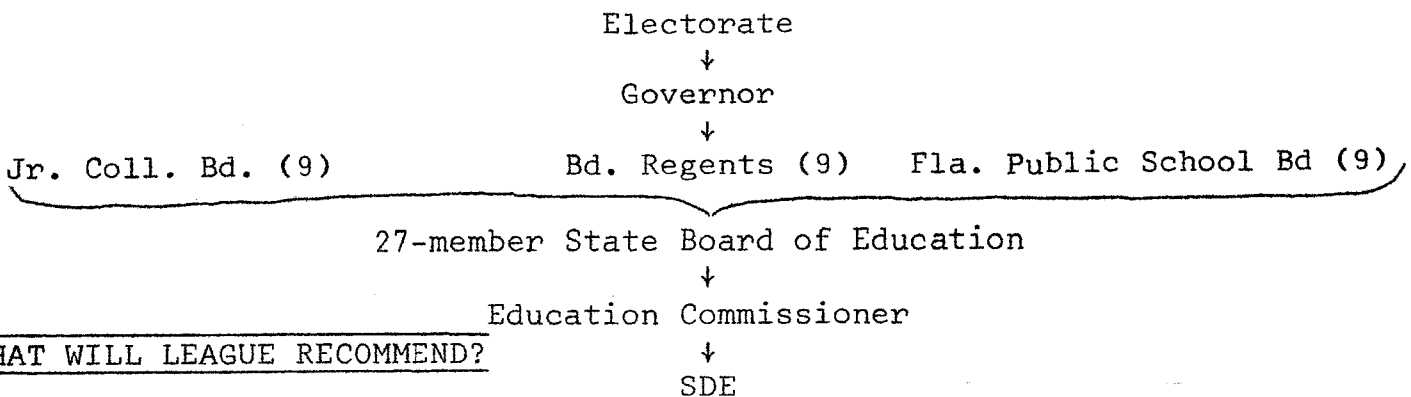


(In Florida this system is constitutional; in most states that have it, it is statutory.)

Virtues: Minimizes danger of too much centralization of power.

Defects: Difficult for executive branch to introduce innovations; split responsibility.

PATTERN X, recommended by Governor's Commission for Quality Education:



WHAT WILL LEAGUE RECOMMEND?

NEWS NOTES

Mrs. Charles K. Mann, our past president, has accepted a position on the State Board. Her portfolio will be connected with the state legislative committee work.

Requests for the new local government booklet have been numerous. An editorial in the Tallahassee Democrat mentioned this new publication, and people do read editorials.

Several League members have been helping at the Human Resources Clearing House, 622 N. Copeland. Anelle Sterk has been helping set up a system for keeping their supply of library books in order. Shirley Taylor and Jean Easton have also been spending some time there, and probably others. Keep up the good work girls. If you haven't been there, do go.

This is the time to become active with a study committee if you have not already done so. Check with the chairman of the committee you are interested in so she can let you know when a committee is to meet. Some committees have been busy all summer and will become more so, others are just getting organized. Join the fun!

The Tallahassee League of Women Voters Yearbook will be published shortly after October 1. If you have not paid your dues, your name cannot be included in the yearbook, so don't put off this chore any longer.

New members since the last issue include:
Mrs. Robert Clay, 1237 Carolina Street
Mrs. Janet Tisdale, 1522 Yancey Street

Miss Verma Westendorp
Rt. 2, Box 109
Tallahassee, Florida 32301



LEAGUE OF WOMEN VOTERS
P. O. BOX 2624
TALLAHASSEE, FLORIDA 32304